



**Engineered Systems Associates**  
**Mechanical Engineers**

Dwayne Sudweeks  
 1355 East Center - Pocatello, Idaho 83201  
 Phone: (208) 233-0501 Fax: (208) 233-0529 email: eso@engsystems.com

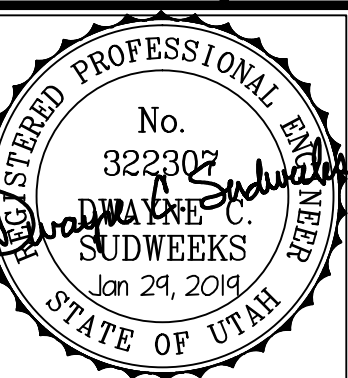
**STRATA APARTMENTS**

LOGAN, UTAH

3rd FLOOR MECH. FLOOR PLANS

PROJECT:

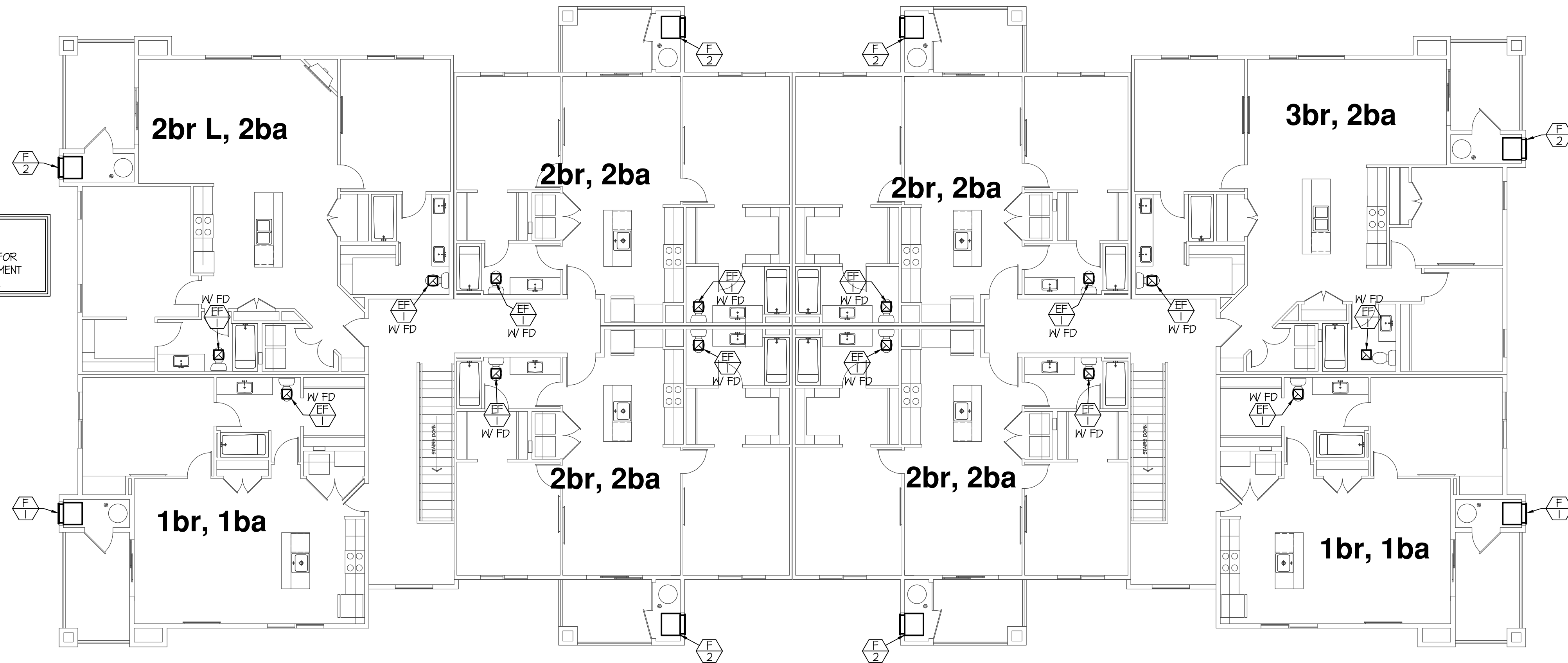
SHEET TITLE:



DRWN. BY: SR	CHK. BY: DCS
JOB NO. 18043	DATE: DEC. 2018

SHEET:  
**M102**  
 OF: THREE

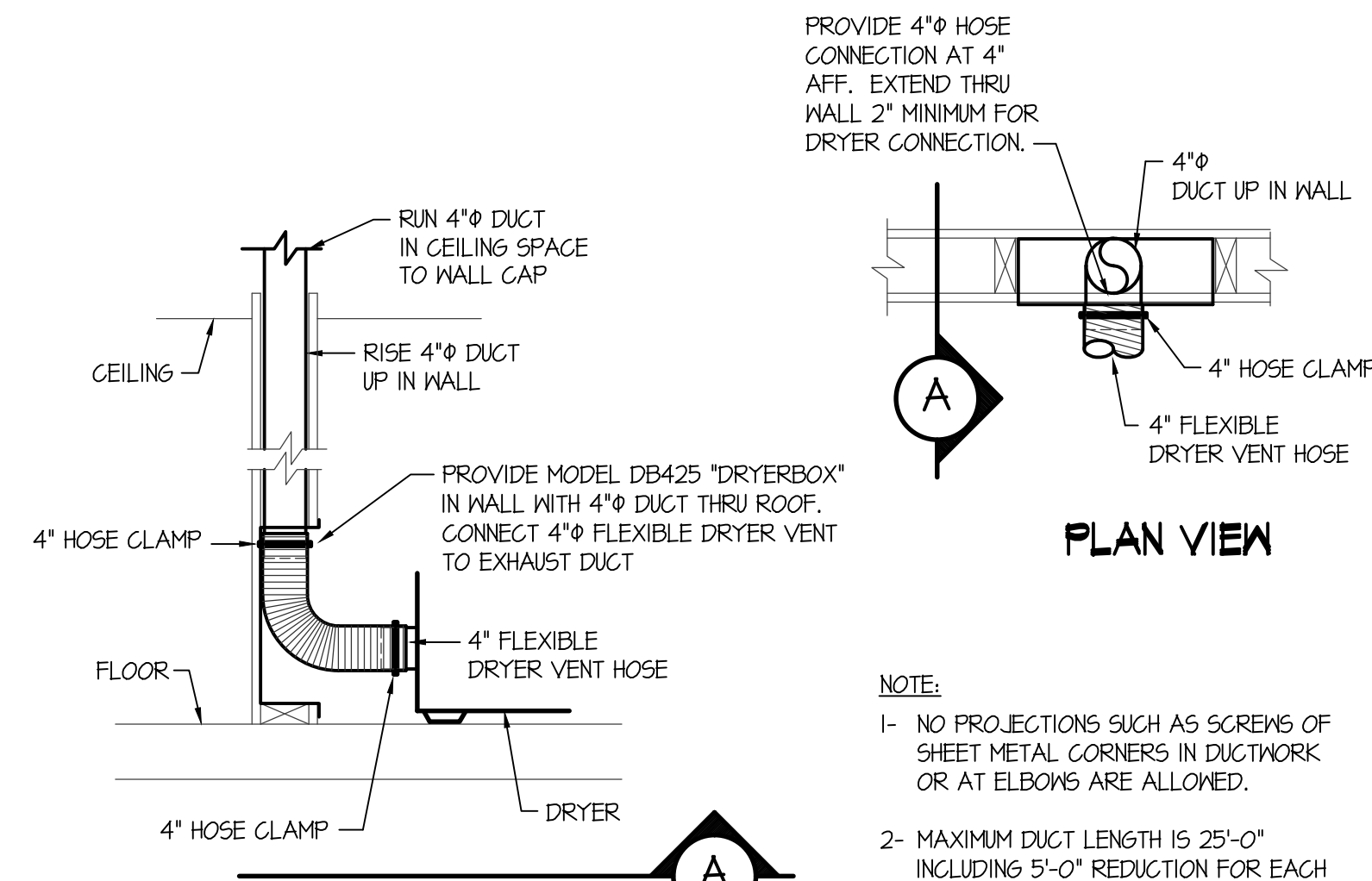
**SPECIAL NOTE:**  
 SEE LARGE SCALE PLANS ON SHEETS M200 FOR TYPICAL DUCTWORK AND MECHANICAL EQUIPMENT LAY-OUT FOR INDIVIDUAL APARTMENT TYPES.



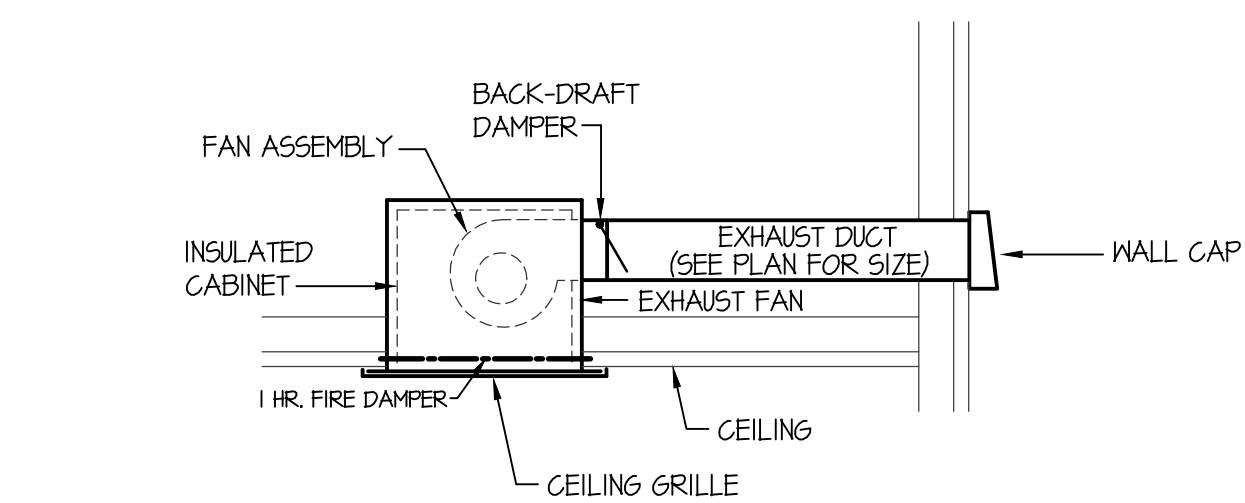
**3rd FLOOR MECHANICAL PLAN**  
 SCALE: 1/8" = 1'-0"

SYMBOL	DESCRIPTION
	SELF-CONTAINED GAS HEATING/ELECTRIC COOLING UNIT - MAGIC-PAK MODEL 48MGE4-04-24IP WITH 24,000 BTU COOLING CAPACITY, 48,000 BTU INPUT HEATING CAPACITY. 800 CFM FLOW AT 0.3" EXTERNAL STATIC PRESSURE. UNIT TO BE FURNISHED COMPLETE WITH LOUVERS TO MATCH. (208-240/60/1 - 20 MCA)
	SELF-CONTAINED GAS HEATING/ELECTRIC COOLING UNIT - MAGIC-PAK MODEL 60MGE4-04-36IP WITH 36,000 BTU COOLING CAPACITY, 60,000 BTU INPUT HEATING CAPACITY. 1050 CFM FLOW AT 0.3" EXTERNAL STATIC PRESSURE. UNIT TO BE FURNISHED COMPLETE WITH LOUVERS TO MATCH. (208-240/60/1 - 22 MCA)
	CEILING MOUNTED EXHAUST FAN - AIRING FRAS-TO (10 CFM) WITH 10x3 DISCHARGE DUCT WITH CEILING GRILLE, FIRE DAMPER, METAL DUCT COLLAR W/ BACK-DRAFT DAMPER AND EXTERIOR WALL CAP.
	ELECTRIC HEATER - QMARK MODEL GFR-2004 SEMI-RECESSED WALL MOUNTED HEATER WITH MOUNTING FRAME, INTEGRAL THERMOSTAT CONTROL, 2 KW ELEMENT (208-240/60/1) WITH 6830 BTU/HR.
	SUPPLY REGISTER #1 - ACCORD 10x6 STEEL ADJUSTABLE CEILING REGISTER WITH TYPE B FIRE DAMPER. PROVIDE BOOT ABOVE GRILLE WITH ROUND DUCT CONNECTION. REFER TO FLOOR PLANS FOR SIZE OF DUCT TO BE CONNECTED TO EACH REGISTER. PROVIDE WHITE FINISH ON ALL CEILING GRILLES.
	TRANSFER AIR GRILLE - ACCORD 10x4 GRILLE WITH WHITE FINISH. TO BE INSTALLED ABOVE DOOR HEADER
	RETURN GRILLE #1 - ACCORD 12x12 GRILLE WITH TYPE B FIRE DAMPER & WHITE FINISH. PROVIDE BOOT ABOVE GRILLE WITH 10" ROUND DUCT CONNECTION.
	OUTSIDE LOUVER #1 - TO BE FURNISHED WITH HVAC UNIT F/1 OR F/2. PROVIDE WALL SLEEVE AS REQUIRED FOR LOUVERS. CONNECT LOUVERS TO UNIT AND SEAL AIR TIGHT.

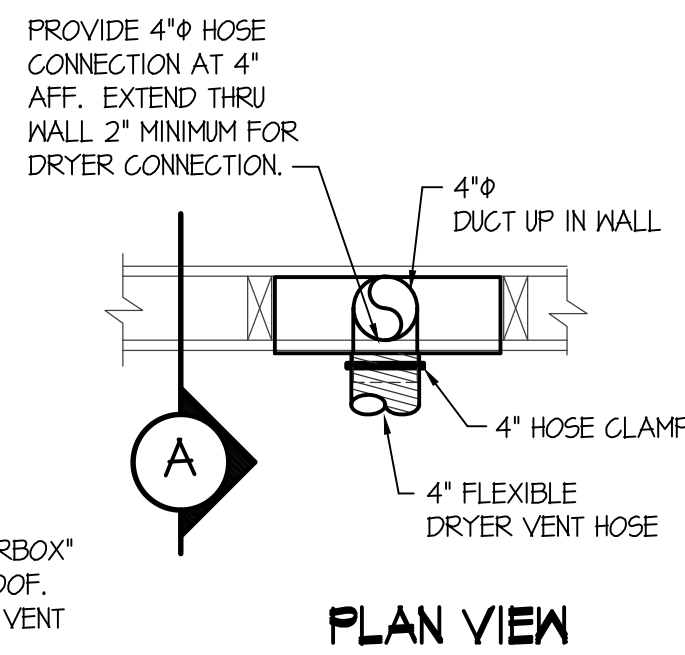
NOTE: ALL SUPPLY GRILLES, RETURN GRILLES & EXHAUST FANS TO HAVE FIRE DAMPERS.



**DRYER VENT DETAIL**  
 NO SCALE

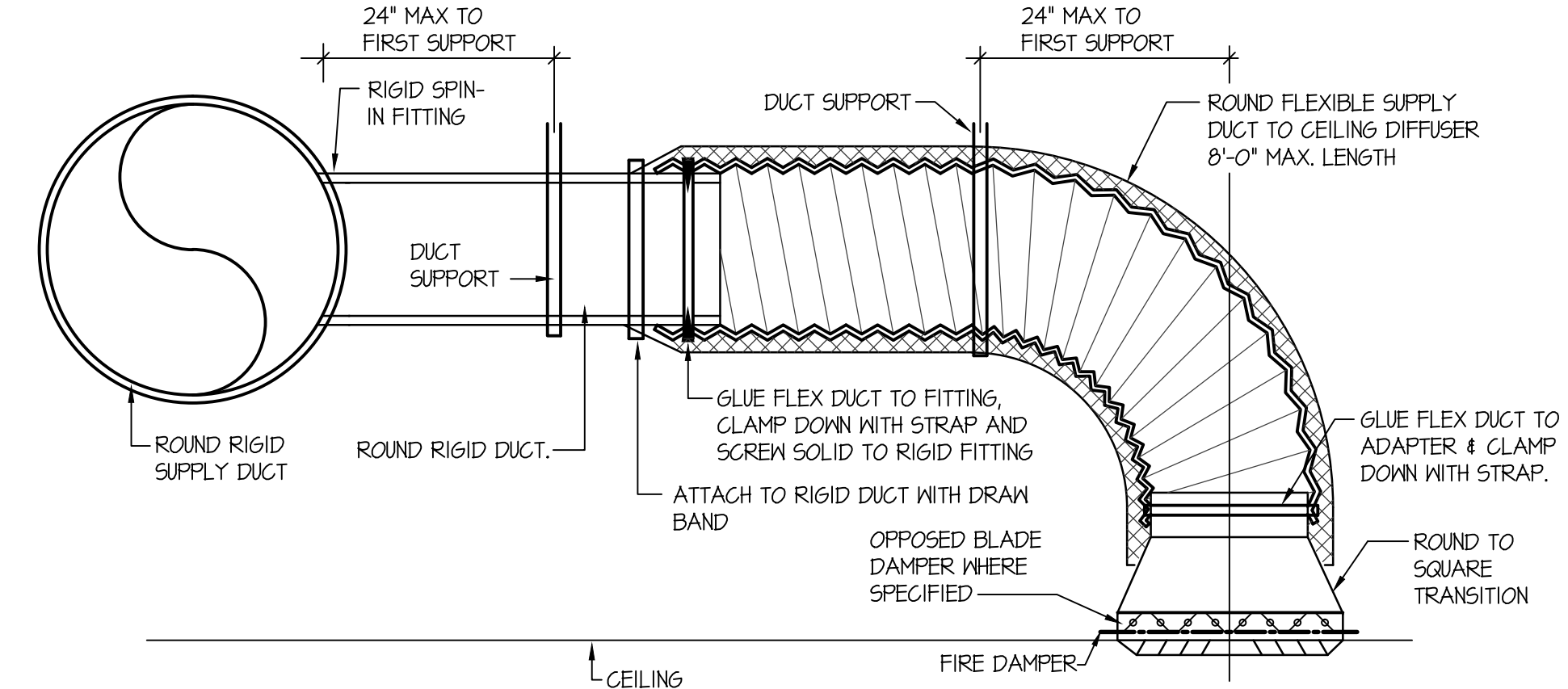


**CEILING MOUNTED EXHAUST FAN DETAIL**  
 NO SCALE

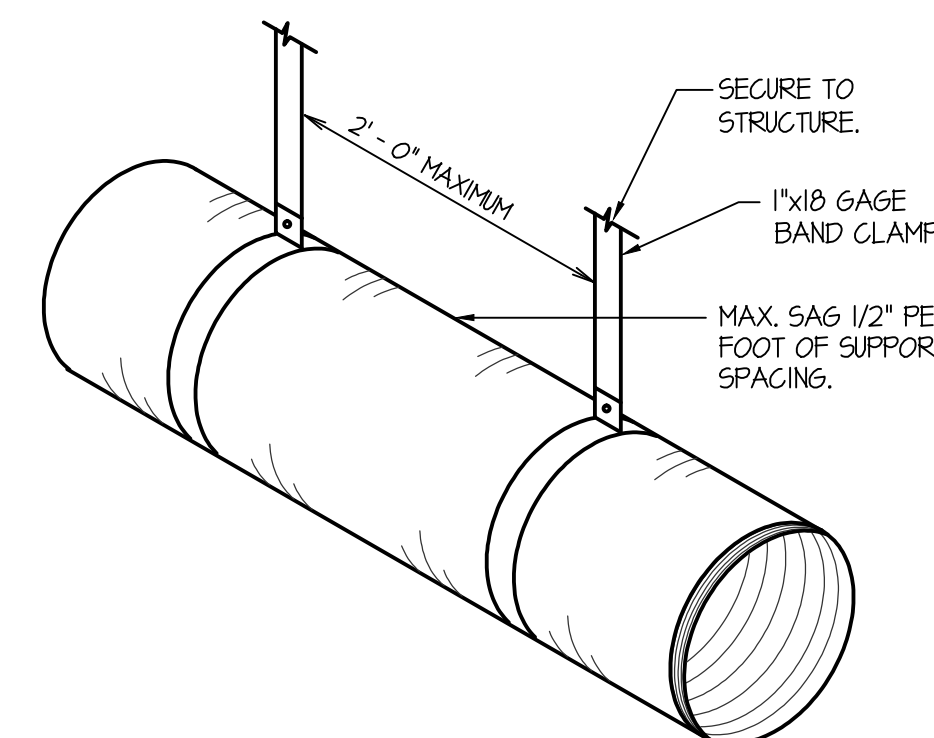


**PLAN VIEW**

NOTE:  
 1- NO PROJECTIONS SUCH AS SCREWS OF SHEET METAL CORNERS IN DUCTWORK OR AT ELBOWS ARE ALLOWED.  
 2- MAXIMUM DUCT LENGTH IS 25'-0" INCLUDING 5'-0" REDUCTION FOR EACH 90° ELBOW.



**CEILING DIFFUSER DETAIL WITH FLEXIBLE DUCT**  
 NO SCALE



**FLEXIBLE DUCT SUPPORT DETAIL**  
 NO SCALE